

onenortherndevon

HISTORY OF ONE NORTHERN DEVON

10 YEARS ON ...
2013 - 2024

2 JULY 2024
OND MEETING PRESENTATION

CONTENTS

- Where it started
- Why it started
- About One Ilfracombe
- OI principles, governance, 3 themes
- OI successes - First two years report
- OI board decision to form OND 2016 to spread success
- OND formed 2016
- Work Programme
- HI strategy
- Programme
- New strategy

ILFRACOMBE

Ilfracombe Harbour





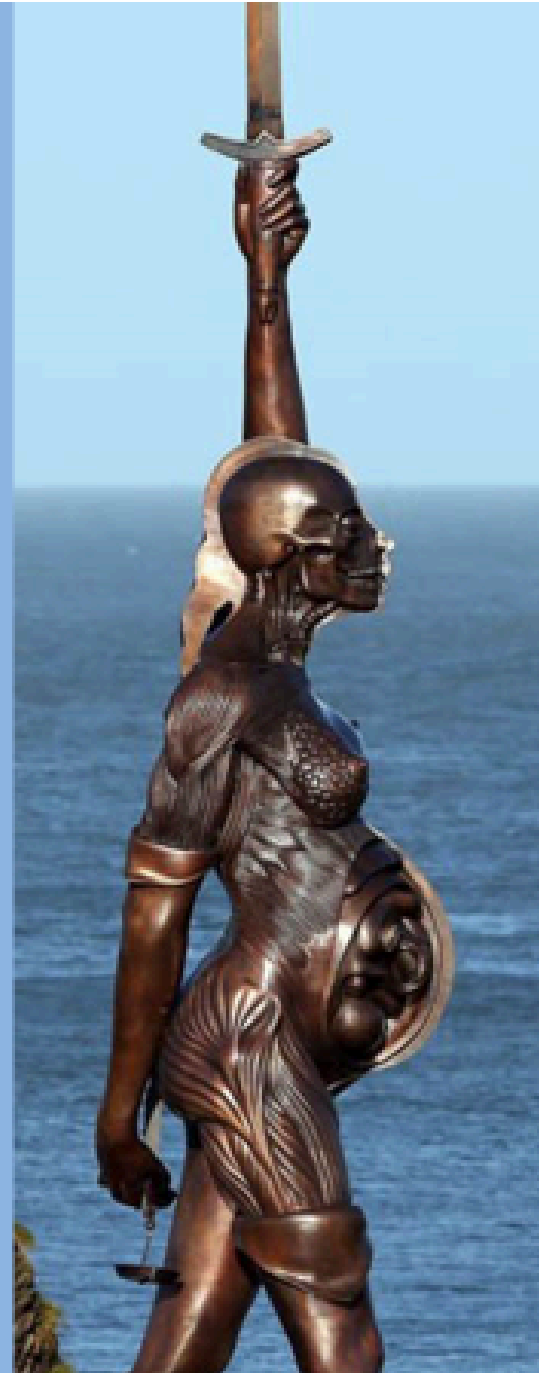
Ilfracombe, Devon
Life expectancy:

74.6

Newton Poppleford, Devon
Life expectancy:

89.6

ILFRACOMBE



Ilfracombe: Devon comparison

Working-age sickness

Alcohol related hospital admissions

Cardiovascular diseases and cancers

Factors affecting health & wellbeing

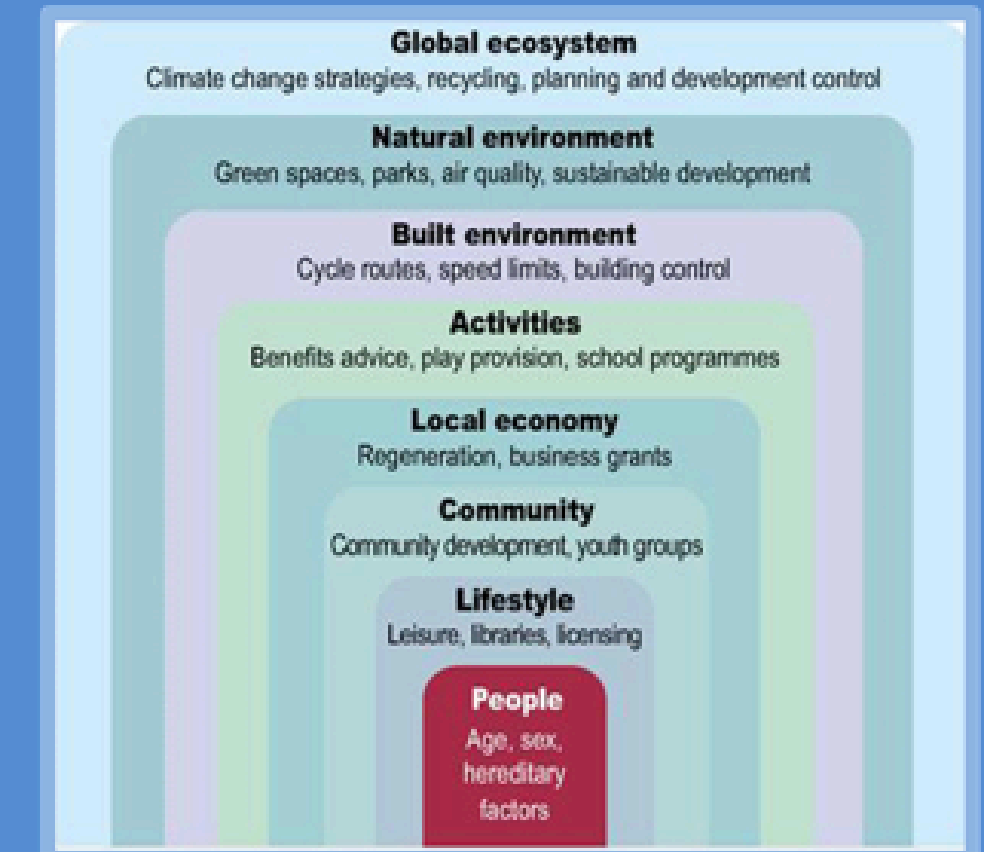
of Ilfracombe residents:

Low wages

Seasonal employment

Poor housing

Poor transport links



My town needs better parking.

COUNTY

I only deal with on-street parking

DISTRICT

I only deal with off-street parking / fines

TOWN

I don't deal with parking but get the blame for doing nothing

Traditional silos getting in the way?



“There are too many players on the pitch for the number of goals scored.”

- Sir Merrick Cockell, Chair of LGA



Department for
Communities and
Local Government

TOPDOWN

Neighbourhood Community Budgets

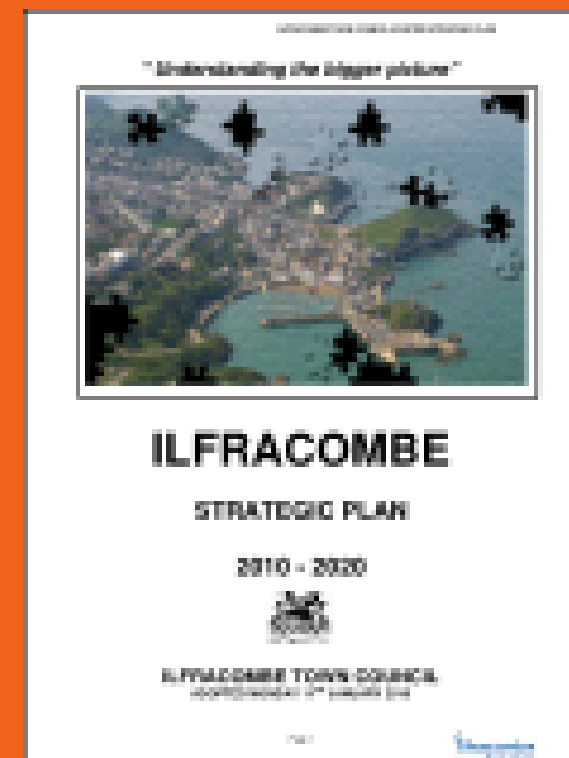
“a way for local public
service providers to
work together to meet
local needs.”



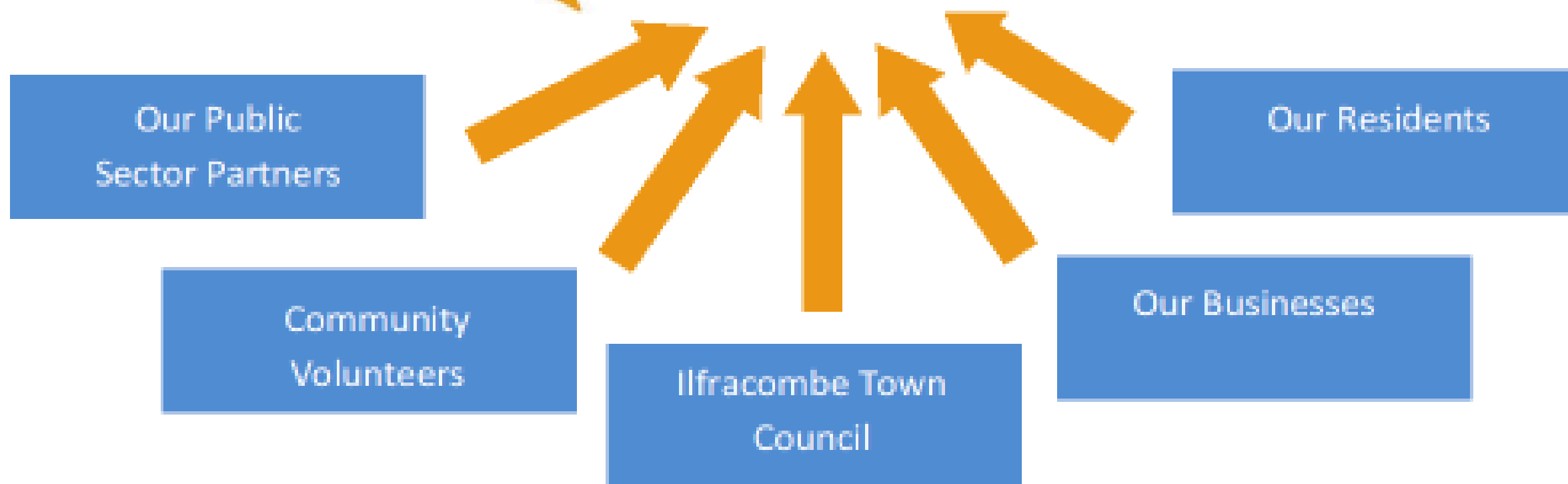
BOTTOMUP

A town with a plan

One-stop-shop co-location of services



Ilfracombe Town Council



One Ilfracombe's public sector partners



One Ilfracombe Directors – Saturday 15th June 2013

Superintendent of Police
Area Commander of Fire Service
District Manager Jobcentre Plus
Communities Director North Devon Homes
Chair of Locality Clinical Commissioning Group
Leader of North Devon Council
Cabinet Member Devon County Council
Finance Director Northern Devon Healthcare Trust
Clinical lead Devon Partnership Trust
6 independent directors

Not-for-profit company
with company directors

A photograph of a statue of a fisherman, likely the 'Fisherman's Friend' statue in Ilfracombe, Devon. The statue is a dark, muscular figure standing on a stone base, wearing colorful striped socks. It is set against a clear blue sky at dusk or dawn, with the sea visible in the background. A street lamp is visible on the left side of the image.

Vision

Better health,
economic prosperity and
high quality living environment
in Ilfracombe

ONE ILFRACOMBE'S 7 KEY PRINCIPLES

1. Gain a better understanding of the problems being tackled from individuals directly affected

2. Redesign the service around the person, not the agency

3. Focus on prevention and reducing demand

4. Develop a co-ordinated, multi agency, multi disciplinary approach and central point of contact

5. Foster community responsibility and support volunteers to help design and provide the solution

6. Establish value for money

7. Explore the potential for One Ilfracombe to be the deliverer and commissioner of services



PRIDE IN OUR TOWN

ONE ILFRACOMBE TOWN TEAM

HEALTH & WELLBEING

(LIVING WELL)

ECONOMY, GROWTH & SKILLS

(ILFRACOMBE WORKS)

WHERE IT STARTED...

one ilfracombe
our future, our choice

01271 855300

www.oneilfracombe.org.uk

info@oneilfracombe.org.uk

@oneilfracombe

DATE
MAY 2015

**THE FIRST
TWO YEARS**

THE STORY OF ONE ILFRACOMBE

onenortherndevon

A partnership of organisations that recognise that unfair and avoidable differences in social, economic and environmental conditions affect the opportunities people have to lead healthy and happy lives.

If we can tackle problems like unsuitable housing, poor employment prospects and social isolation, we can help prevent the poor health that results from such factors.

We collaborate to increase impact and reduce waste in order to best tackle inequalities and improve health and wellbeing for the people and communities of North Devon & Torrington.

Our vision is that people in Northern Devon live happy and healthy lives in safe, clean and connected communities where people are supportive of one another and aspirations are achieved through equal access to the best education & employment, whilst living in decent homes and enjoying our world-class natural environment.



onenortherndevon

Who are we?

One Northern Devon is a partnership of public services, businesses, voluntary & community groups

What do we do?

We **collaborate** together, influence policy & **work over the long term** to improve the quality of life, protect our shared natural environment and address local inequality

Why do we exist?

We exist because **concerted, systematic action** is needed across **multiple fronts** to address the causes of health & social inequalities. We need to work as **ONE system** to tackle complex, multifaceted factors involved

Our strength:

Our strength is in being able to **bring organisations and communities together** to change things for the better

Our approach:

Collaboration is key - there are things we can only do and problems we can only solve if we work together.

A SYSTEM NOT SECTOR STRATEGY

“Interventions to tackle health inequalities need to reflect the complexity of how they are created and perpetuated, otherwise they could be ineffective or even counterproductive. Evidence shows that a comprehensive approach can make a difference. This includes, but goes well **beyond, the health and care system.**” - King’s Fund

“**We need a vision & mission which brings together local effort** with specific goals to narrow the gap. It will mean **new partnerships with other public services, with the community and voluntary sector and with industry.** We are watching with interest the government’s ‘levelling up’ agenda ... focusing on the links between health and economic development, to understand and develop the considerable opportunities in this area” – NHS Confed, Feb 2020

onenortherndevon

Three programmes of work



PERSON

One-to-one support for individuals

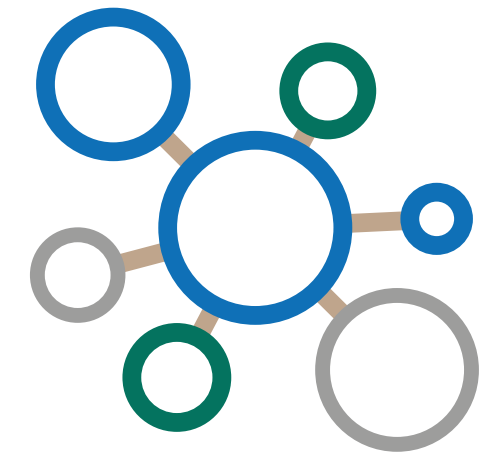
Person-centred services where understanding what matters to the service user is prioritised and a team is pulled in to support them taking into account their circumstances and past experiences.



PLACE

Whole population support to communities

Services commissioned and delivered in a 'place-based' way, taking into account the individual needs and assets available in a place and supporting system infrastructure at community level. Just as context matters on an individual level, so it matters on a community level.



SYSTEM

Organisational support for system co-ordination

Organisations work together and co-ordinate their activities so that people didn't have to try and piece them together themselves.

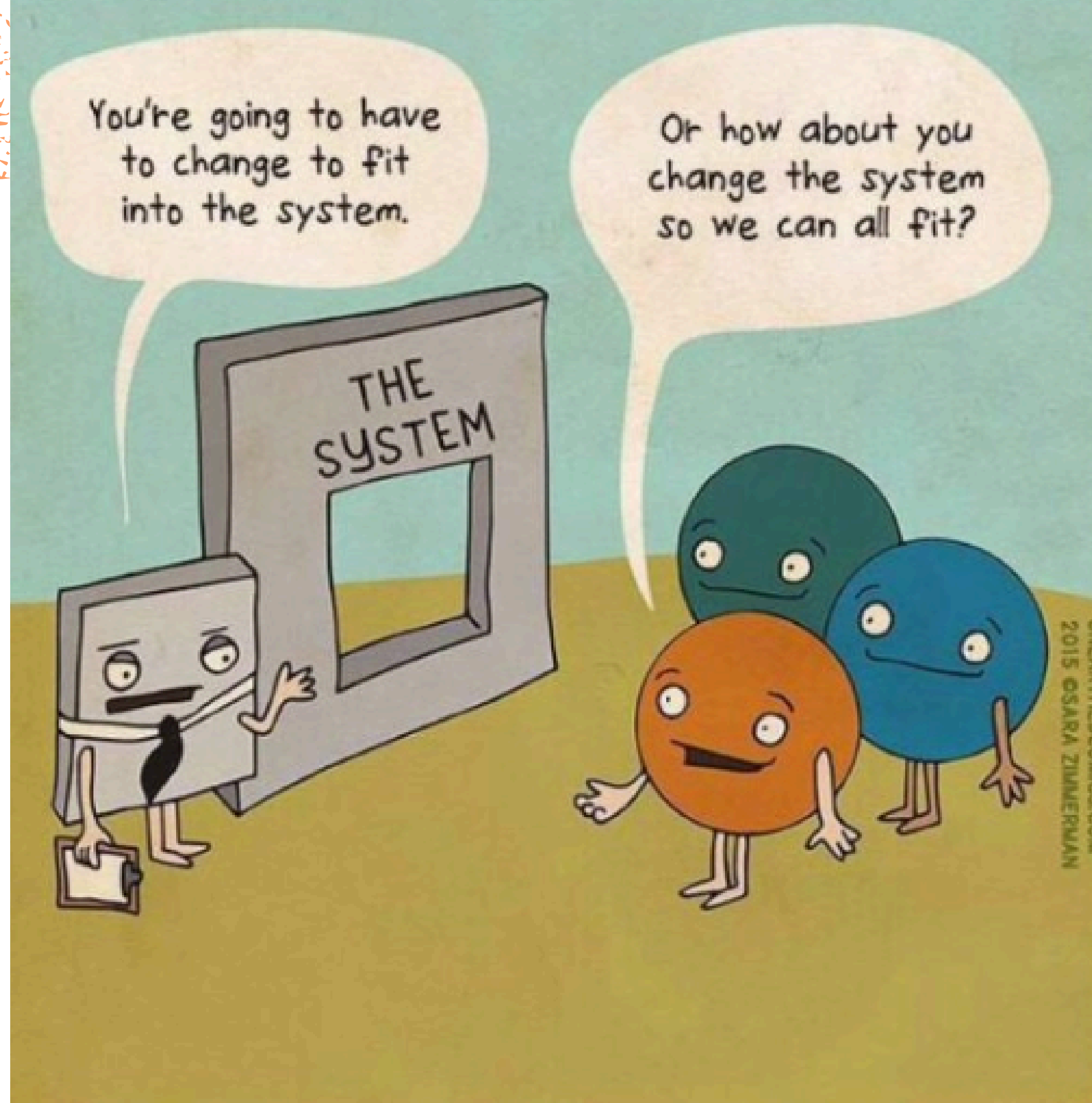
PROGRAMME 1: PERSON-CENTRED SERVICES

Why needed?

People most in need of support are least likely to receive it.

Many describe feeling 'bounced around' services telling their story again & again.

People feel distanced from the professionals that support them as they get referred to multiple services.



PROGRAMME 2: PLACE

ONE COMMUNITIES



one northern devon

2013

2017

2018

2019

One Atlantic

2020

one southern molton

2021

Holsworthy & District Community Forum

one ilfracombe
our future, our choice

Live Well in Branton
Connecting the Community

One
BARNSTAPLE
connecting our communities

TORRINGTON
100
One Great Community

PROGRAMME 3 SYSTEM CO-ORDINATION

10 PRIORITIES

We aim to tackle these inequalities together through interventions focussed on 10 priorities:

THEME	PRIORITY	LEAD PARTNER
Health & wellbeing	1. Obesity/healthy weight (pg 2)	Devon CCG
	2. Loneliness (pg 3)	NDVS & TTVS
	3. Crisis prevention and support (pg 4)	D&C Police & Devon PH
	4. Child poverty (pg 5)	Action for Children
Safe, clean sustainable places	5. Fuel poverty (pg 6)	361 Energy
	6. Climate emergency (pg 7)	North Devon Biosphere
	7. Strong and resilient communities (pg 8)	One Communities Group
Economy, employment & skills	8. Supporting local employers (pg 9)	North Devon Plus
	9. Local supply chain development (pg 10)	North Devon Biosphere
	10. Increasing employment opportunities (pg 11)	Petroc



**THANKS FOR
LISTENING!**

**ANDREA BEACHAM
ONE NORTHERN DEVON PROGRAMME MANAGER
SENIOR PROGRAMME MANAGER FOR HEALTH
INEQUALITIES**

ROYAL DEVON UNIVERSITY HEALTHCARE TRUST

ANDREA.BEACHAM@NHS.NET